

# "komfort" Touch+ Programmable Thermostat



Glacier White



Sapphire Black

## Features

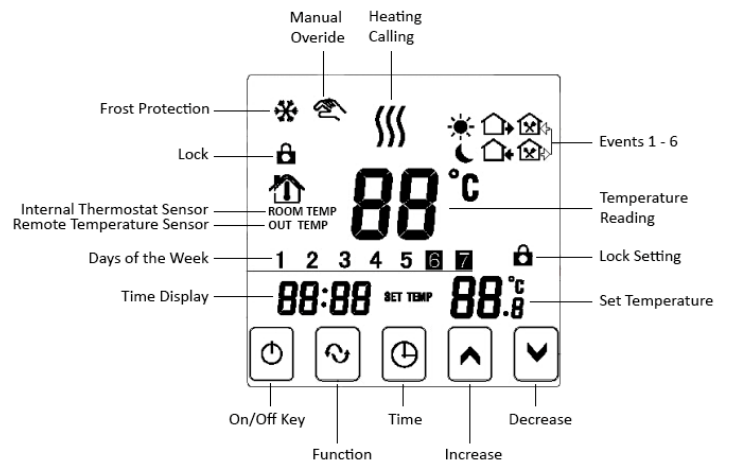
- Large LCD screen with blue backlight display and double temperature display mode showing the actual and the target temperature.
- 24 hour time and day of the week display
- 6 period programmable time and temperature settings
- Internal or external temperature sensor option
- Room temperature is displayed on increments of 0.5°C.
- Adjustable temperature settings for occupants comfort
- Memory storage in event of power failure
- The Komfort Touch+ Thermostat room temperature is programmed for automatic operation.

## Function and Display Icons

|  |  |
|--|--|
|  | Constant = Manual Control ON<br>Flashing = Temporary Manual Control ON<br>Not displayed = Automatic Control ON |
|  | Heating On   |
|  | Frost Protection On  |
|  | 1 <sup>st</sup> Program Event  |
|  | 2 <sup>nd</sup> Program Event  |
|  | 3 <sup>rd</sup> Program Event  |
|  | 4 <sup>th</sup> Program Event  |
|  | 5 <sup>th</sup> Program Event  |
|  | 6 <sup>th</sup> Program Event  |
|  | Constant = Locked      Not displayed = Unlocked<br>Press  7 seconds to lock / Press  7 seconds to unlock       |

## Komfort Touch+ Stat Symbols

| Symbol | Symbol Description |
|--------|--------------------|
|        | On / Off Button    |
|        | Function Key       |
|        | Time Setting       |
|        | Increase           |
|        | Decrease           |



## Setting Automatic Heating Control

All these settings should be programmed with Thermostat Power **On**

### 1) Time Setting and Day of Week

- Press key once to change to the correct time using or to adjust the hour. Then press again to change the minute then finally again to change the day of the week.

### 2) Programming the number of Days

- Hold for 5 seconds screen will display **loop**
- Press Screen will display "12345" **Mon to Fri** (this will allow you to set the weekend with different temperatures than the week);

Or press again, and the screen will display "123456" **Mon to Sat** (allowing just Sunday to be set differently)

Or press again, and the screen will display "1234567" **Mon to Sun** (to set all days the same).

- Once the days are set tap once to go straight into your temperature and time settings

### 3) Setting Temperatures and Time Settings

- The instructions above brings you to Event 1 - Press or to adjust temperature
- Press to set scheduled time, press or to adjust hour.

### 1. Default Factory Heat Settings

| Days               | Event | Icon | Time Period | Temp. |
|--------------------|-------|------|-------------|-------|
| 1 - 6              | 1     |      | 06.00 hrs   | 20° C |
|                    | 2     |      | 08.00 hrs   | 15° C |
|                    | 3     |      | 11.30 hrs   | 15° C |
| Monday to Saturday | 4     |      | 12.30 hrs   | 15° C |
|                    | 5     |      | 17.30 hrs   | 22° C |
| Sunday             | 6     |      | 22.00 hrs   | 15° C |
|                    | 1     |      | 08.00 hrs   | 15° C |
|                    | 2     |      | 23.00 hrs   | 15° C |

**N.B. The thermostat will have the above settings by default**

- The press to change minute again using or . Press to move to the next event
- Follow in same manner above until you have set all the Events 1-6 as required for your programmed days

**Please Note:** Once your auto heat settings have been set there may be times when you want to manually adjust your temperature settings for a short interval using or . Hand will temporarily flash if you have altered your auto heat settings but once the next scheduled heat setting starts it will return back to auto control settings (no hand). To constantly override your auto temperatures tap once (hand constant). To revert back to auto heat setting, tap (no hand)

# "komfort" Touch+ Programmable Thermostat

## Technical Data

- Power Supply: AC220~240V, 50/60HZ
- Load Current: 3A(Water Heating)
- Accuracy:  $\pm 0.5^{\circ}\text{C}$
- Room Temperature Range:  $5^{\circ}\text{C} - 60^{\circ}\text{C}$
- Remote Limit Temperature Range:  $5 - 99^{\circ}\text{C}$
- Consumption:  $< 0.3\text{W}$
- Temperature Sensor: NTC
- Size:  $86 \times 86 \times 17\text{mm}$  (H\*W\*D)

## Notes

- Temperature can be temporarily adjusted using  $\Delta$  or  $\nabla$ . The hand will flash to show the temporary temperature adjustment but will disappear and return back to auto when your next scheduled temperature setting starts.
- Setting temperature to  $00.0^{\circ}\text{C}$  will shut down the scheduled setting
- The thermostat offers a choice of room sensor, remote sensor or alternatively both together
- When set to room sensor the display shows ROOM TEMP when set to remote sensor temperature the display shows OUT TEMP
- When using dual sensors, to check floor temperature setting – in power on state, press and hold  $\oplus$  then tap  $\ominus$  once
- Display will show Er if the remote sensor has been set but it is not actually connected or if it is damaged

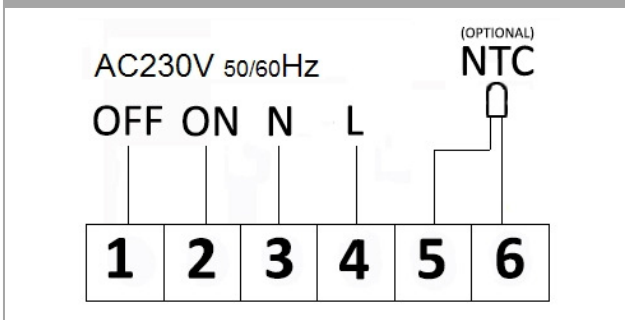
## ELECTRICIAN / ENGINEER INSTRUCTIONS

To access advanced settings, in power off state, press and hold  $\oplus$  and tap  $\ominus$ . Press  $\odot$  to move through the symbol settings. To adjust settings use  $\Delta$   $\nabla$ , tap  $\odot$  to confirm and to move to next symbol setting.

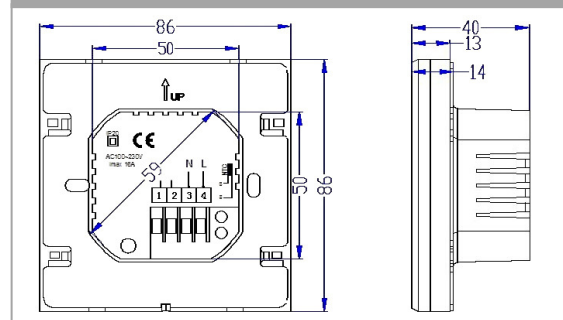
### Advanced Settings

| No. | Symbol | Item   | Parameter Setting Function   | Factory Default Setting    |
|-----|--------|--|--|----------------------------|
| 1   | 5EN    | Sensor Reading Option  | 0: Room Sensor<br>1: Remote Sensor<br>2: Room & Remote Sensor              | 0: Room Sensor             |
| 2   | 05U    | Remote Temperature Setting   | 5-99 $^{\circ}\text{C}$  | 42 $^{\circ}\text{C}$      |
| 3   | dIF    | Remote Temperature Difference Limit - Difference between Target Temperature and Calling For Heat | 1-9 $^{\circ}\text{C}$   | 2 $^{\circ}\text{C}$       |
| 4   | 5UH    | Temperature High Limit Setting   | 5-99 $^{\circ}\text{C}$  | 35 $^{\circ}\text{C}$      |
| 5   | 5UL    | Temperature Low Limit Setting  | 5-99 $^{\circ}\text{C}$  | 5 $^{\circ}\text{C}$       |
| 6   | Adj    | Temperature Calibration  | Measure temp - Calibrate if necessary                                      | 0.1                        |
| 7   | FrE    | Frost Protection   | 00: Off<br>01: On  | 00: Off                    |
| 8   | Pon    | Memory   | 00: Off<br>01: On  | 00: Off                    |
| 9   | FAC    | Factory Default  | 00: To Restore Factory Settings<br>08: Default Display Number (no meaning) | 08: Default Display Number |

### POWER WIRING DIAGRAM



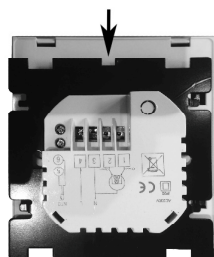
### INSTALLATION DIMENSIONS



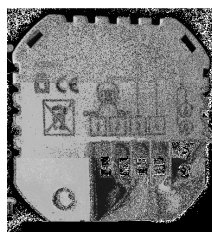
### INSTALLATION



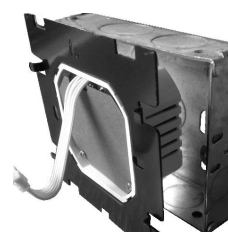
To open, push a flat screwdriver in to both slots in the bottom of the thermostat



Push the back from the front as shown, remove connecting plug



Connect up wiring as indicated putting actuator live on terminal 2



Screw thermostat back plate to 35mm wall box with screws provided



Re connect plug and snap thermostat on to lugs